

Microstation CONNECT Workspace Setup

For All Standard Configuration WorkSpaces

Using the NCDOT CONNECT WorkSpace as an example, this should work right out of the box if the WorkSpace is stored as “C:\MICROSTATION_CONNECT_WORKSPACE\Configuration”.

Standard Internally at the NCDOT

1. Delete old WorkSpace and WorkSpace desktop icons and .cfg files (desktop location only).

2. Download WorkSpace ZIP

3. Extract WorkSpace ZIP to the root C:\ drive. *

4. Copy shortcuts icons and input (.inp) files from WorkSpace to your desktop.

➤ C:\MICROSTATION_CONNECT_WORKSPACE\Configuration\WorkSpaces\DOT-US North Carolina\Desk

5. If desired edit the desktop “NCDOT_WorkSets.inp” to navigate to where your Projects (WorkSets) are stored.

Line #29

```
NCDOT_USE_LOCAL_WORKSETS = {Load Value}
```

Load Value:

- L0 {R:\Common} if connected
- L1 {C:\Projects\NCDOT} new default
- L2 {C:\MICROSTATION_CONNECT_WORKSPACE\Configuration\Organization-Civil\Disciplines\NCDOT_(Unit)\WorkSets} old default for NCDOT Unit specific training
- L3 {\\Configuration\WorkSpaces\DOT-US North Carolina\WorkSets}

* Note in Step #3, the WorkSpace ZIP file also automatically installed an example WorkSet (Project) “C:\Projects\NCDOT\B-0000”. In addition, the “ConfigurationSetup.cfg” file has been automatically modified accordingly:

Line #21

```
_USTN_CUSTOM_CONFIGURATION=C:\MICROSTATION_CONNECT_WORKSPACE\Configuration\
```

For OpenRail and OpenBridge to work together with OpenRoads using the same WorkSpace, the “ConfigurationSetup.cfg” file for each CONNECT civil platform is modified with the same value. This is the standard installation folder which is required for proper functionality.

- C:\ProgramData\Bentley\OpenRoads Designer CE\Configuration
- C:\ProgramData\Bentley\OpenRail Designer CE\Configuration
- C:\ProgramData\Bentley\OpenBridge Designer CONNECT Edition\OpenBridgeModeler\Configuration

There is no need to modify the “**WorkspaceSetup.cfg**” in the same folder as the past. This file should NOT be edited from when it was installed with default values.

External PEF Setup Adaptation for the NCDOT and Other WorkSpaces – continue

(F-6) 6. **Defining the PEFs “WorkSpaces Root” location:** Determine a common Workspace location for all DOTs. This should end with the “Configuration\WorkSpaces” folder.

➤ Q:\CADD\Microstation\CONNECT\Configuration\WorkSpaces

7. Copy the NCDOT and/or other DOT Workspace “Configuration” folder (which includes Organization, Organization-Civil and WorkSpaces folders) to your new location.

From:

(F-7A) ➤ C:\MICROSTATION_CONNECT_WORKSPACE\Configuration

To:

(F-7B) ➤ Q:\CADD\Microstation\CONNECT\Configuration

8. Edit the “ConfigurationSetup.cfg” file (C:\ProgramData\Bentley\OpenRoads Designer CE\Configuration):

(F-8) Line #21

_USTN_CUSTOM_CONFIGURATION=Q:\CADD\Microstation\CONNECT\Configuration\

(F-9A) 9. **Defining the PEFs “WorkSets Root” location:** By default, WorkSets (Projects) are stored in each DOT WorkSpaces\WorkSets folder (local C:\ drive or network server depending on the Workspace location).

➤ \\Configuration\WorkSpaces\{DOT}\WorkSets

This is perfectly fine for the DOTs who store their WorkSets (Projects) in a single location.

The NCDOT CONNECT Workspace offers the option to connect to your WorkSets (Projects) in various multiple locations. The use of the desktop “NCDOT_WorkSets.inp” Load Value (NCDOT_USE_LOCAL_WORKSETS = {Load Value}) allows users to perform this action. At this point, internally and externally, WorkSets Load Values L1 thru L3 are the same. L0, WorkSets stored on the PEF server – not using the NCDOT R:\ drive, is the only difference.

Edit the “NCDOT_Worksets.inp” on your desktop:

(F-9B) Line 15:

MY_WORKSET_LOCATION =

Q:\CADD\Microstation\CONNECT\Configuration\WorkSpaces\DOT-US North Carolina\WorkSets\

(This can be any predefined folder location on the same or different network server).

(F-9C) Line 29:

NCDOT_USE_LOCAL_WORKSETS = L0

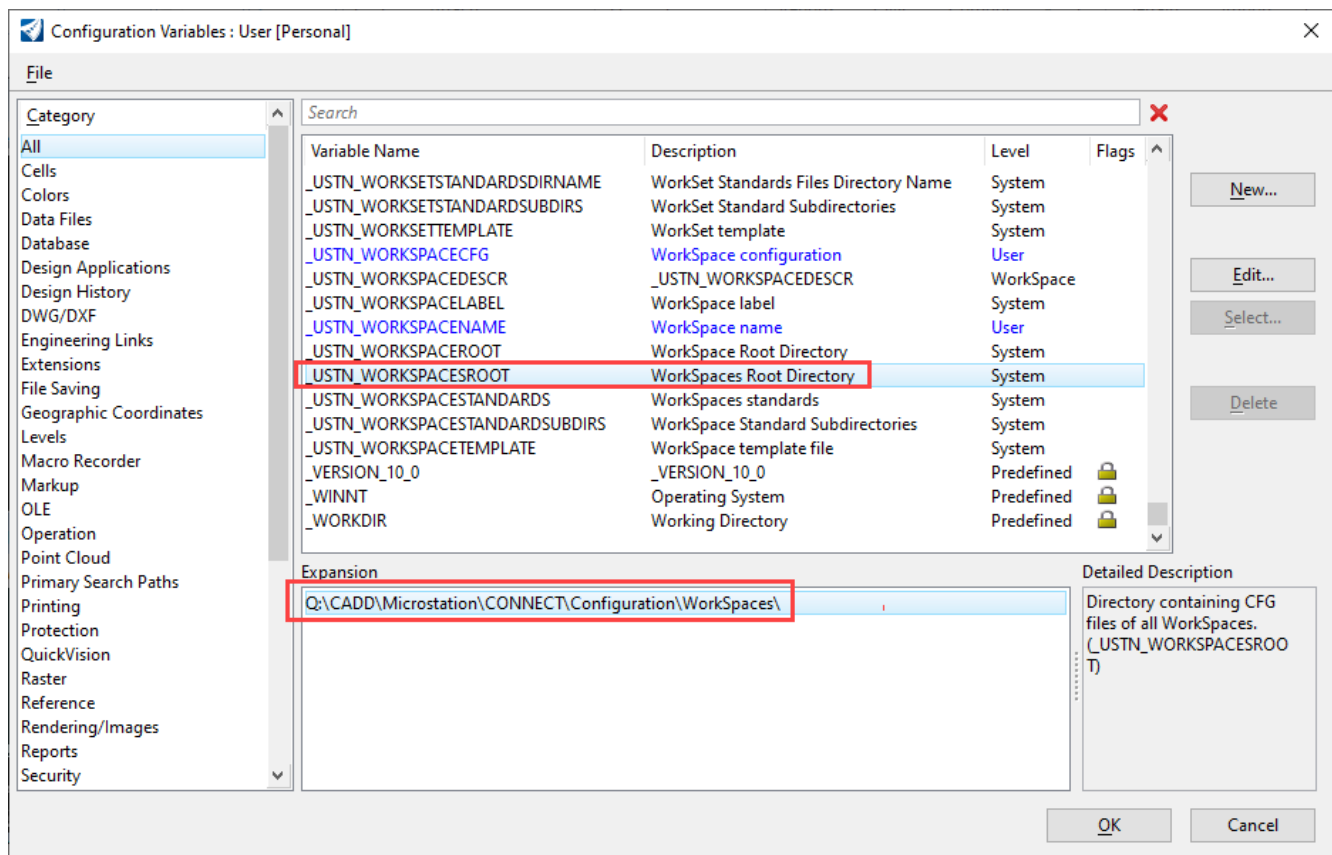
(F-10A) 10. If a WorkSet (Project) does not already exist in the new WorkSets Root folder, then simply Create new
(F-10B) WorkSet.

(F-10C) 11. Adding other DOT WorkSpaces to your firm’s “WorkSpaces Root” can be accomplished in the same

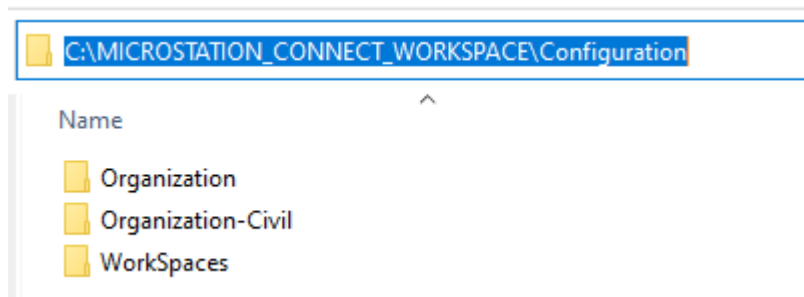
(F-11) manner. Once you have downloaded their WorkSpaces, simply copy their “Configuration” folders and place them in your firm’s location.

Figures

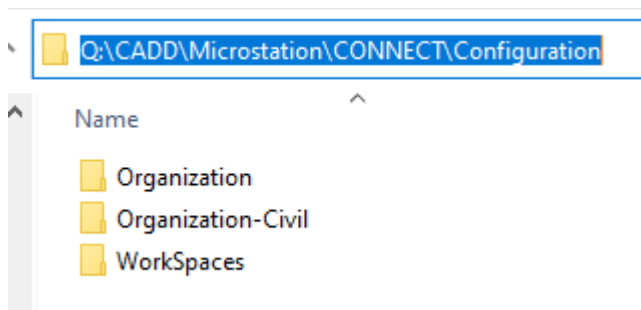
F-6



F-7A



F-7B

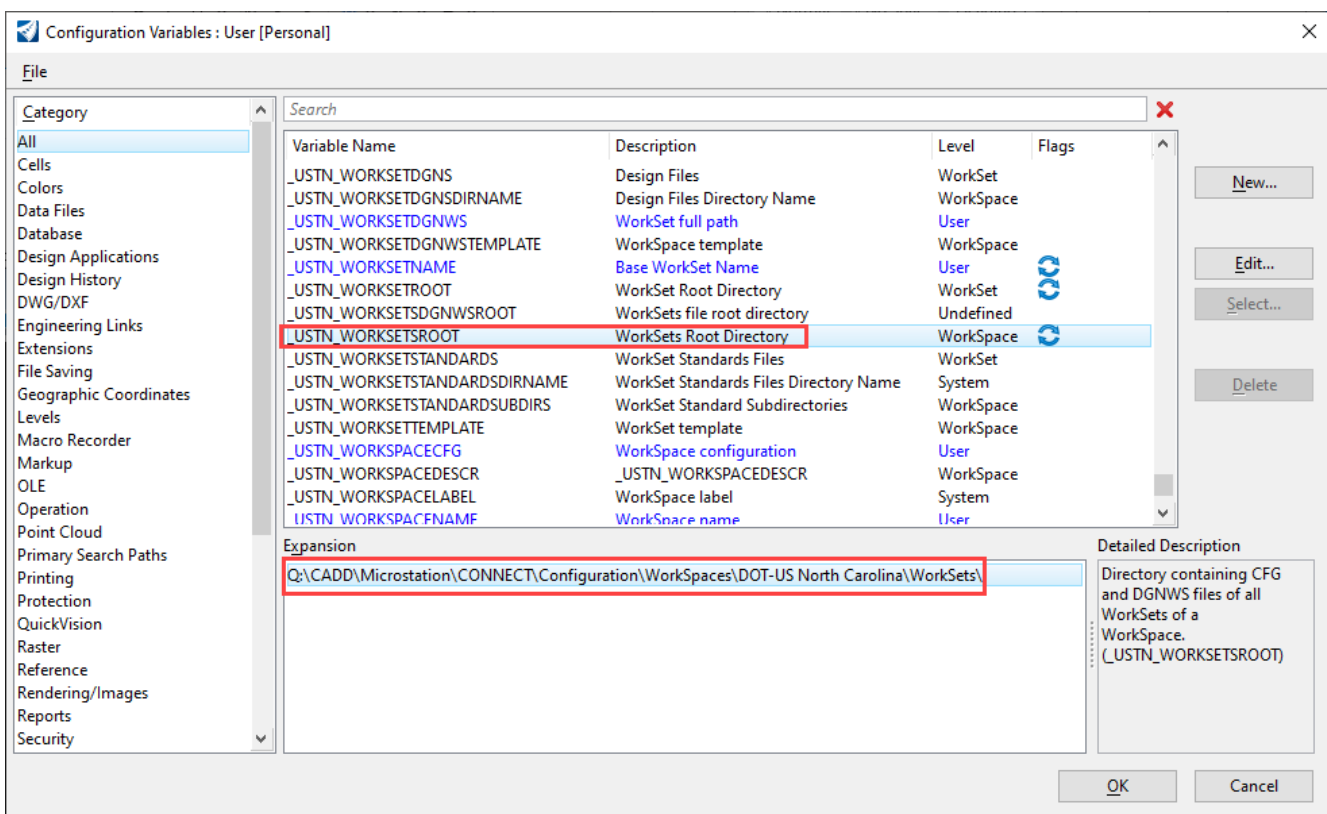


```

ConfigurationSetup.cfg x
16
17 #-----
18 # START: The section defines user selection at the time of installation.
19 # These lines are generated by installer.
20 [General]
21 _USTN_CUSTOM_CONFIGURATION=Q:\CADD\Microstation\CONNECT\Configuration\
22

```

F-9A



F-9B

```

NCDOT_WorkSets.inp x
# <<<< Make Changes Here >>>>
MY_WORKSET_LOCATION = Q:\CADD\Microstation\CONNECT\Configuration\WorkSpaces\DOT-US North Carolina\WorkSets\

```

```

NCDOT_WorkSets.inp x
25 # L2 - Use local NCDOT Unit training and workspace admin WorkSets.
26 # L3- Use local or server WorkSets stored under the WorkSpaces\WorkSets folder (Bentley Default).
27 # <<<< Make Changes Here >>>>
28
29 NCDOT_USE_LOCAL_WORKSETS = LO
30
31 #-----

```

Create WorkSet [X]

Name:

Description:

Template: Create Folders Only

+ Add a Custom Property ▾

Folder locations

Root Folder:

Design Files:

Standard Files:

Standards Subfolders:

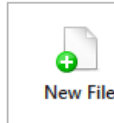
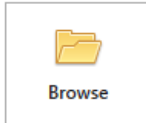
ProjectWise Projects

OpenRoads Designer CONNECT Edition

DOT-US North Carolina ▾ HP-0000 ▾

Recent Files

You haven't opened any files recently.



- Admin-NC
- HP-0000

+ Create WorkSet...
.....

Q:\CADD\Microstation\CONNECT\Configuration\WorkSpaces\DOT-US North Carolina\WorkSets\HP-0000

New folder

Name	Date modified	Type	Size
Approvals	8/20/2020 9:32 AM	File folder	
Common	8/20/2020 9:32 AM	File folder	
Construction	8/20/2020 9:32 AM	File folder	
Contract Standards	8/20/2020 9:32 AM	File folder	
Drainage	8/20/2020 9:32 AM	File folder	
DTM	8/20/2020 9:32 AM	File folder	
Environmental	8/20/2020 9:32 AM	File folder	
FinalSurvey	8/20/2020 9:32 AM	File folder	
Geotech	8/20/2020 9:32 AM	File folder	
Gpk	8/20/2020 9:32 AM	File folder	
Hydraulics	8/20/2020 9:32 AM	File folder	
LightingElectrical	8/20/2020 9:32 AM	File folder	
LocationSurveys	8/20/2020 9:32 AM	File folder	
LongRangePlanning	8/20/2020 9:32 AM	File folder	
Multimodal	8/20/2020 9:32 AM	File folder	
out	8/20/2020 9:32 AM	File folder	
PDEA	8/20/2020 9:32 AM	File folder	
Photogrammetric	8/20/2020 9:32 AM	File folder	
RightOfWay	8/20/2020 9:32 AM	File folder	
Roadway	8/20/2020 9:32 AM	File folder	
Structures	8/20/2020 9:32 AM	File folder	
Traffic	8/20/2020 9:32 AM	File folder	
Utilities	8/20/2020 9:32 AM	File folder	

Recent WorkSets

- DOT-US North Carolina HP-0000
- DOT-US North Carolina Admin-NC
- DOT-US North Carolina B-0000
- No WorkSpace No WorkSet

OpenRoads Designer CONNECT Edition

DOT-US North Carolina HP-0000

Search

* Custom Configuration

- City-NC Charlotte
- City-NC Raleigh
- City-NC Wilmington
- DOT-AU Queensland
- DOT-AU Victoria
- DOT-UK Wessex
- DOT-UK Yorkshire
- DOT-US Alabama
- DOT-US California
- DOT-US Connecticut
- DOT-US Florida
- DOT-US Georgia
- DOT-US North Carolina
- DOT-US Ohio
- DOT-US Pennsylvania
- DOT-US South Carolina
- DOT-US Texas
- DOT-US Virginia
- Town-NC Apex
- Town-NC Cary
- Town-NC Wake Forest

Example Configuration

- Imperial Standards

No WorkSpace

- Create WorkSpace
- Configuration Migration

Q:\CADD\Microstation\CONNECT\Configuration\WorkSpaces

Name

- City-NC Charlotte
- City-NC Raleigh
- City-NC Wilmington
- DOT-AU Queensland
- DOT-AU Victoria
- DOT-UK Wessex
- DOT-UK Yorkshire
- DOT-US Alabama
- DOT-US California
- DOT-US Connecticut
- DOT-US Florida
- DOT-US Georgia
- DOT-US North Carolina
- DOT-US Ohio
- DOT-US Pennsylvania
- DOT-US South Carolina
- DOT-US Texas
- DOT-US Virginia
- standards
- Town-NC Apex
- Town-NC Cary
- Town-NC Wake Forest
- City-NC Charlotte.cfg
- City-NC Raleigh.cfg
- City-NC Wilmington.cfg
- DOT-AU Queensland.cfg
- DOT-AU Victoria.cfg
- DOT-UK Wessex.cfg